

Lab School for Innovation & Career Exploration

James Madison University
Rockingham County Public Schools
Blue Ridge Community College



JAMES MADISON UNIVERSITY



Updates to the Application

- October 19 site visit
 - Instructional Program/Standards
 - Special Education
 - Lottery Guidelines
 - Facilities
 - Pre-service Placements
 - Role of JMU/BRCC Faculty
 - Per Pupil term
 - In-kind/Partnerships
 - Sustainability

Vision & Mission

- The *vision* of the Lab School is to become an innovation hub for career exploration and workforce development through interdisciplinary, problem-focused application of solving community needs, leading to college and career readiness
- The *mission* of the Lab School is to create a space for innovation, and a space for students to engage in high-level application of real-world problem solving, leading to college and career readiness.

Pre-professional Career Pathways

○ JAMES MADISON UNIVERSITY ○

Career Pathways

- Education
- Health professions
- Social services
- Government/public relations
- Aviation maintenance
- Automotive technology
- Business management
- Information technology

← Leveraging the strengths of JMU and BRCC →

Locations for Lab School

- East Rockingham High School
- Broadway High School
- Spotswood High School
- Turner Ashby High School

- JMU Memorial Hall
- Blue Ridge Community College



Student Population

	2024-25		2025-26		2026-27		2027-28		2028-29	
High School	Target	Grades	Target	Grades	Target	Grades	Target	Grades	Target	Grades
East Rockingham	50	9	100	9-10	125	9-11	150	9-12	150	9-12
Broadway	50	9	100	9-10	125	9-11	150	9-12	150	9-12
Spotswood			50	9	100	9-10	125	9-11	150	9-12
Turner Ashby			50	9	100	9-10	125	9-11	150	9-12
Total	100		300		425		550		600	

JMU/BRCC in 11th/12th grades

	2024-25		2025-26		2026-27		2027-28		2028-29	
	Target	Grades	Target	Grades	Target	Grades	Target	Grades	Target	Grades
High School										
East Rockingham	50	9	100	9-10	125	9-11	150	9-12	150	9-12
Broadway	50	9	100	9-10	125	9-11	150	9-12	150	9-12
Spotswood			50	9	100	9-10	125	9-11	150	9-12
Turner Ashby			50	9	100	9-10	125	9-11	150	9-12
Total	100		300		425		550		600	

Sample Schedule-9th & 10th Grades (in RCPS)

BLOCKS	A DAY	B DAY
1	LAB SCHOOL	LAB SCHOOL (Floating Planning)
"Advisory"	If students remain with the Lab School, two of the four teachers are assigned. (Alternate with the other two.) Otherwise, teachers will not be assigned an Advisory to allow for additional common planning.	If students remain with the Lab School, two of the four teachers are assigned. (Alternate with the other two.) Otherwise, teachers will not be assigned an Advisory to allow for additional common planning.
2	LAB SCHOOL	LAB SCHOOL
3	Teach Class	Common Planning for all four teachers
4	Teach Class	Teach Class

Sample Schedule- 11th/12th Grades (JMU/BRCC)

BLOCKS	A DAY	B DAY
1	JMU / BRCC / MTC extension classes - could be on JMU/BRCC campus or virtual	JMU / BRCC / MTC extension classes - could be on JMU/BRCC campus or virtual
"Advisory"	Not scheduled - off campus	Not scheduled - off campus
2	JMU / BRCC / MTC extension classes - could be on JMU/BRCC campus or virtual	JMU / BRCC / MTC extension classes - could be on JMU/BRCC campus or virtual
3	VA/US History	English 11
4	Math class: Algebra II, Statistics, AFDA, etc.	Science class: Astronomy, Chemistry, Adv. Biology, Physics, etc.

Sample Interdisciplinary Course Description

My Place in This World I (9th Grade)

This is an interdisciplinary course that combines the curriculum frameworks from **English 9, World Geography, Environment Science and Health/PE 9**. Students will engage with the scientific principles, concepts, and methodologies required to understand the interrelationships of the natural world and human interaction, including their own well-being as a productive member of society. The course requires that students identify and analyze natural and human-made environmental problems, evaluate the relative risks associated with these problems, and examine alternative solutions for resolving or preventing them. As well, the interdisciplinary nature of this course will employ a project-based learning approach to address the standards for each content area and to build upon the 5 C's, communication, critical thinking, collaboration, creativity, and citizenship.

Experiential Learning



- Internships
- Externships
- Community Service

Innovative Learning Spaces

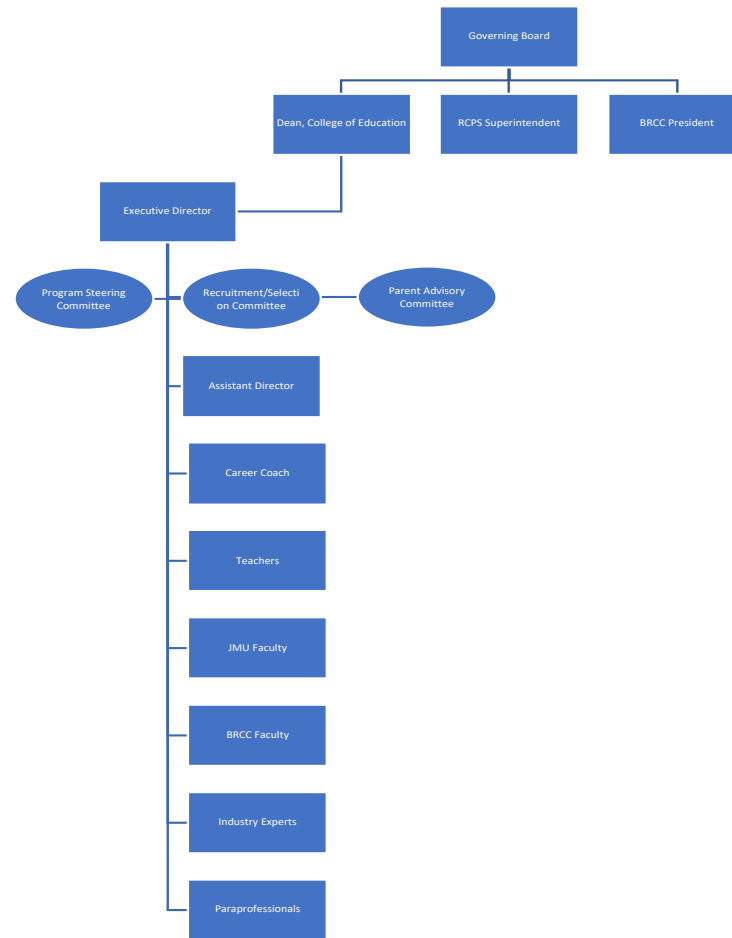


Student Voice & Choice

- 9th Grade
- 10th Grade
- 11th Grade
- 12th Grade



Governance



Staffing

Year 1

Position	Number
Executive Director	1
Career Coach	1
Teachers	8
Paraprofessionals	2
Industry Experts	4
JMU Faculty	2
Blue Ridge Faculty	2
Graduate Assistants	2
JMU Student Teachers	*4
JMU Practicum/Field Placement Students	*25

Year 2

Position	Number
Executive Director	1
Career Coach	1
Teachers	18.75
Paraprofessionals	4
Industry Experts	8
JMU Faculty	4
Blue Ridge Faculty	4
Graduate Assistants	4
JMU Student Teachers	*18
JMU Practicum/Field Placement Students	*50

Year 3

Position	Number
Executive Director	1
Assistant Director	1
Career Coach	1
Teachers	26.5
Paraprofessionals	6
Industry Experts	8
JMU Faculty	6
Blue Ridge Faculty	6
Graduate Assistants	4
JMU Student Teachers	*26
JMU Practicum/Field Placement Students	*100

Year 4

Position	Number
Executive Director	1
Assistant Director	1
Career Coach	1
Teachers	34.375
Paraprofessionals	8
Industry Experts	8
JMU Faculty	8
Blue Ridge Faculty	8
Graduate Assistants	4
JMU Student Teachers	*34
JMU Practicum/Field Placement Students	*200

Year 5

Position	Number
Executive Director	1
Assistant Director	1
Career Coach	1
Teachers	37.5
Paraprofessionals	8
Industry Experts	8
JMU Faculty	8
Blue Ridge Faculty	8
Graduate Assistants	4
JMU Student Teachers	*37
JMU Practicum/Field Placement Students	*200

1: 16 Ratio

JMU/BRCC Faculty Expertise

Engaged Faculty will:

- lead curriculum development
- provide professional learning opportunities for teachers
- study and inform evidence-based practices that occur at the Lab School
- serve as liaison between the instructional programming at the school and pre-professional programming within the university/community college
- facilitate learning opportunities for pre-service university students to learn from and interact with elements of the Lab School

Overload Compensation Options in the Budget

Finance

- Per Pupil Model
- \$5600 per student (in Year 2)
- Sustainability



Transportation/Meals/Services

- In-kind by partners



2023-2024 Start-up Year

- Prepare academic spaces
- Curriculum development/planning
- Hiring Executive Director
- Hiring Career Coach
- Recruitment of students



\$1.72M invested already!

Lab School for Innovation & Career Exploration

Opening Fall 2024

 JAMES MADISON UNIVERSITY 